

TO Mr. Tracy O. Bennett, Director
Planning, Building & Zoning Dept. DATE January 29, 1979
FROM Mr. K. S. Rogers, P.E., Director
Land Development Division FILE
RE BASE BUILDING LINE WAIVER - QUAIL RIDGE PLAT NO. 6

PLAT NO. 6 QUAIL RIDGE

(A PLANNED UNIT DEVELOPMENT)

BEING A SUBDIVISION OF A PORTION OF THE NW 1/4 OF
SECTION 31, TOWNSHIP 45 SOUTH, RANGE 43 EAST,
VILLAGE OF GOLF AND PALM BEACH COUNTY, FLORIDA
IN 2 SHEETS SHEET NO. 2

OCTOBER 1976

32

PROPERTY LOCATION: Lots 10 thru 14 of Quail Ridge Plat No. 6
as recorded in Plat Book 32, Page 82 in
Section 31, T 45S, R 43E.

The Base Building Line for the above property location shall be
established at the platted limits of the access road and utility
easement as shown on the subject plat.

KSR:AAK:CWR:mac

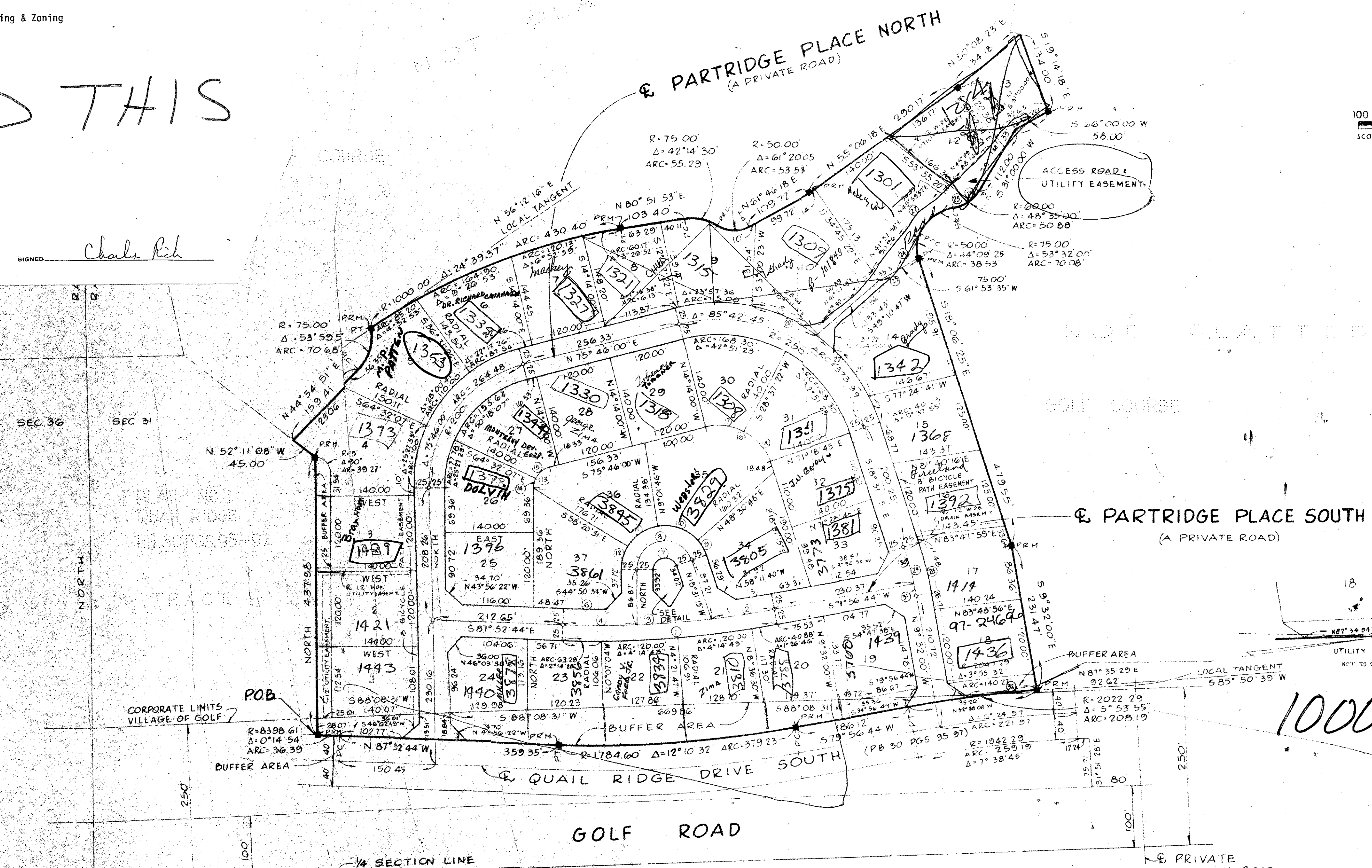
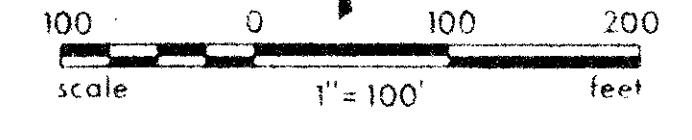
copies to: Bob Brockway
Building Official

Joan DeCamp
Planning, Building & Zoning

READ THIS

SIGNED: *Charles Rich*

Ella Mae Hurley
Quail Ridge
Const.



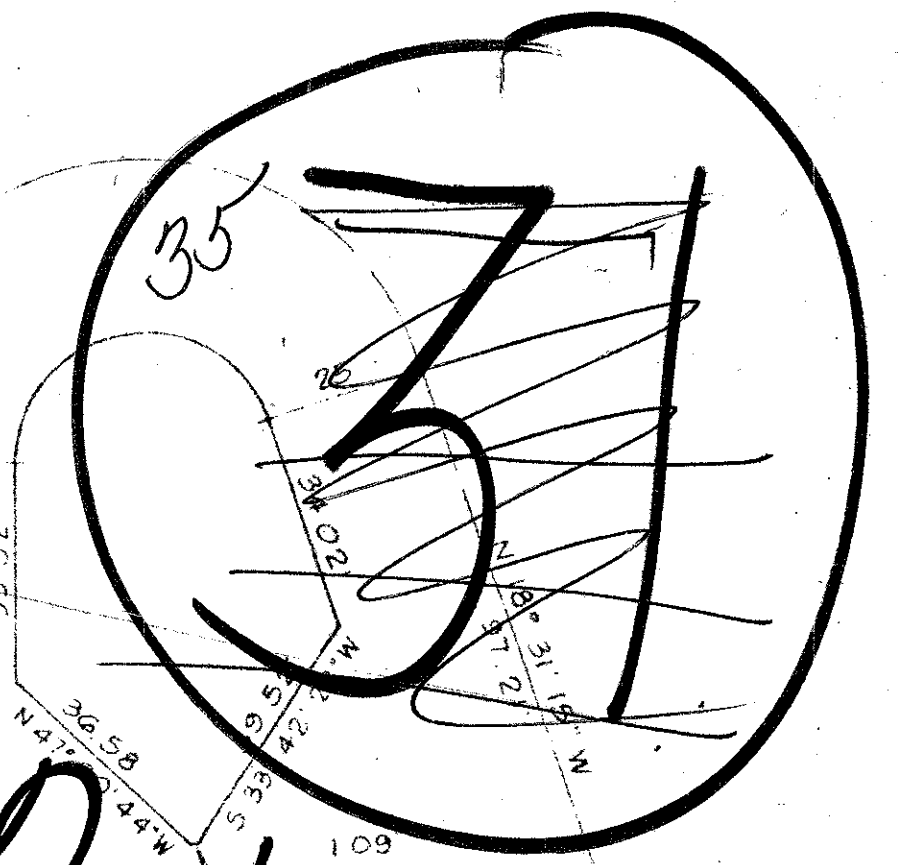
CURVE DATA TABLE

No.	Radius	Δ	Arc	Tangent
1	1619.65'	12°-10'-32"	344.17'	172.74'
2	1594.69'	2°-40'-51"	102.44'	51.24'
3	1594.69'	4°-16'-20"	118.90'	59.48'
4	1594.69'	4°-13'-21"	117.52'	58.78'
5	1549.60'	2°-11'-12"	59.91'	29.96'
6	1563.60'	2°-26'-07"	66.72'	33.36'
7	25.00'	161°-28'-45"	56.37'	153.33'
8	45.00'	161°-28'-45"	126.83'	275.99'
9	70.00'	22°-57'-57"	28.06'	14.22'
10	70.00'	5°-32'-34"	70.32'	38.44'
11	70.00'	49°-18'-44"	60.25'	32.13'
12	70.00'	31°-39'-39"	38.68'	19.65'
13	35.00'	75°-46'-00"	46.28'	27.23'
14	35.00'	25°-27'-53"	15.55'	7.91'
15	35.00'	50°-18'-07"	30.73'	16.43'
16	85.00'	85°-42'-45"	127.16'	78.87'
17	85.00'	42°-51'-22"	63.58'	33.36'
18	85.00'	41°-51'-23"	63.58'	33.36'
19	275.00'	18°-11'-27"	87.31'	44.03'
20	275.00'	28°-57'-36"	115.00'	58.35'
21	275.00'	18°-53'-35"	90.68'	45.76'
22	275.00'	26°-53'-00"	129.03'	65.73'
23	250.91'	9°-38'-10"	33.46'	16.76'
24	250.91'	15°-29'-17"	67.83'	34.12'
25	60.00'	28°-31'-48"	29.88'	15.25'
26	60.00'	20°-03'-12"	21.00'	10.61'
27	95.00'	35°-41'-05"	59.17'	30.58'
28	525.00'	8°-59'-15"	82.35'	41.26'
29	500.00'	8°-59'-15"	78.43'	39.10'
30	500.00'	6°-43'-28"	58.68'	29.17'
31	500.00'	6°-15'-47"	19.75'	9.88'
32	2022.29'	3°-17'-29"	116.17'	58.10'

1000-165

QUAIL RIDGE

31/45/43
32/82



"DETAIL"
NOT TO SCALE